

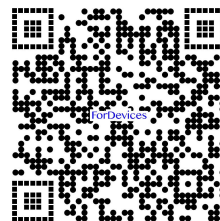


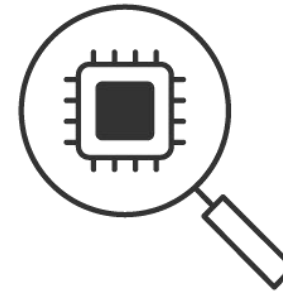
ForDevices Electronics Technologies Corporation



富鴻創芯電子(深圳)有限公司

(Chinese 中文版)



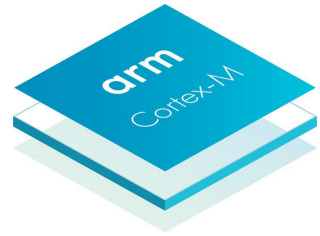


- 01 營業範圍 Key Business (P3)
- 02 器件系列 Analog Devices Series (P4)
- 03 器件目錄 Product Catalog (P5~P40)
- 04 營業位置 Business Location (P41)
- 05 重要申明 Important Statement (P42)

目录

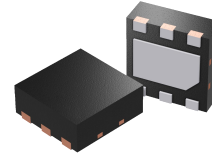
CONTENTS





Microcontrollers

- ARM Cortex-M0+
- ARM Cortex-M3
- ARM Cortex-M4
- ARM Cortex-M7



Analog Devices

- Power IC: DC-DC | LDO | PMIC | RTC Switch(Power/Hall/Load/OVP) ...
- MOSFET : Low/High Voltage(~300V)
- Memory: SPI Flash(1.0~64Mbit) EEPROM(2K~512Kbit)
- OPA: u/nOPA/Zero Drift/Low Noise
- Analog Swithc
- BMU: Battery Charger/Balance/Protection
- Interface: RS-232/RS-485/RS-422
- Motor Driver
- LED Driver: LED Lighting / WLED Backlight



Solutions

- IoT(Internet of Things)
- AI(Speech recognition)
- Health Care Electronics
- Microwave communication solutions(24GHz/77GHz)
- 2.4G wireless communication

2000+
Part No.




MCU Advantages

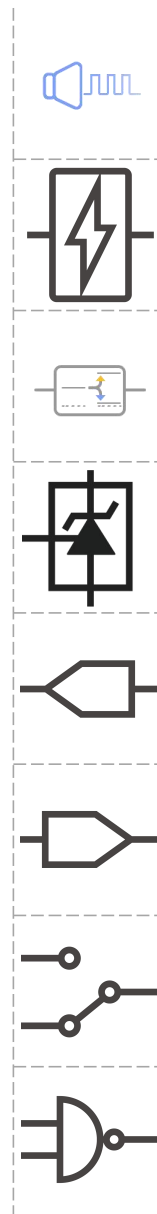
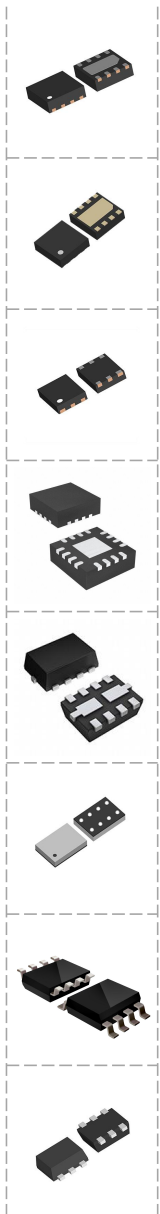
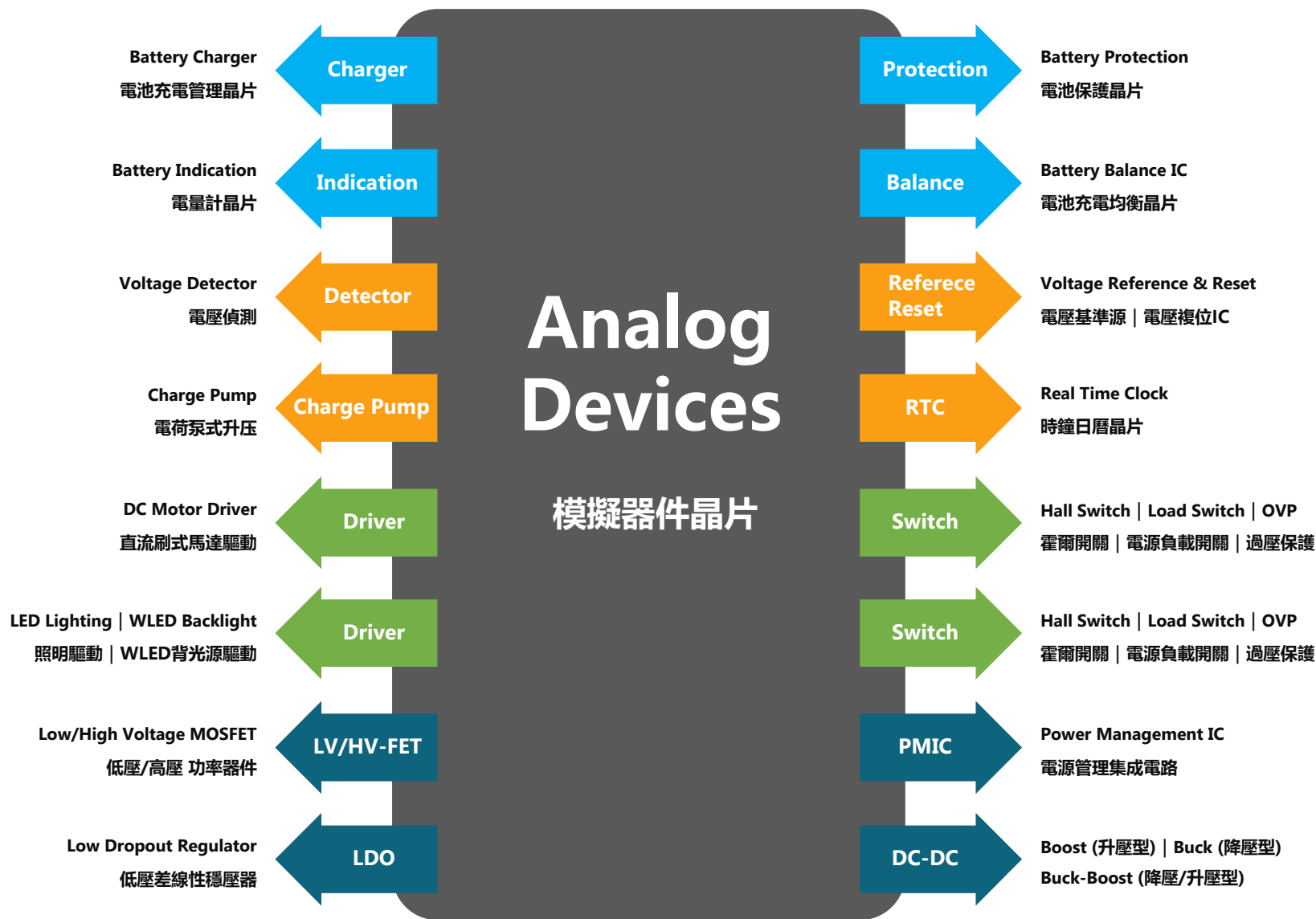
- ... Excellent versatility
- ... Good alternative compatibility
- ... Perfect for mainstream OS
- ... Mass-ready solutions

Chip Advantages

- ... Complete range of device selection application types
- ... The device family consists of 2,000+ models
- ... The device uses advanced wafer process technology
- ... The device is available in an advanced package structure

SDK Advantages

- ... Software: APP PC / Mobile / SDK
- ... Hardware Layout: PCB+BOM
- ... Cloud APP / Server
- ...  +  + 



Part No.	Vin(V)	Load Current(A)	Vout(V)	I _{ss} (uA)	FOSC (KHz)	Control Mode	Efficiency	V _{fb} (V)	Power Good Output	Packaged	SPQ
FH4001	1.0~6.0	0.6	2.0~6.0	17.0	1000	PWM	90%	1.250	-	SOT-23-6L SOT-89-5L	3000PCS 1000PCS
FH4003	0.9~6.5	0.3	1.8~5.0	15.0	320	PFM Synchronous	95%	0.800	-	SOT-23-3L/5L SOT-89-3L	3000PCS 1000PCS
FH4004	2.7~5.5	0.3	~22.0	90.0	1000	PWM	90%	1.230	-	SOT-23-5L	3000PCS
FH4005	0.8~6.5	0.3	2.1~5.5	6.0	300	PFM	95%	0.900	-	SOT-23	3000PCS
FH4101	1.8~5.5	1.2	2.5~4.5/ADJ	60.0	1000	PFM/PWM	95%	0.600	-	SOT-23-6L	3000PCS
FH4102	1.0~6.0	1.1	2.5~5.5	21.0	1000	PWM	90%	1.000	-	SOT-23-6L	3000PCS
FH4103	2.8~5.0	1.2	~6.0	80.0	1500	PFM/PWM	92%	0.600	-	SOT-23-6L	3000PCS
FH4104	0.6~5.0	1.0	3.3~5.0	1.0	1400	PWM	94%	1.110	-	SOT-23-6L DFN2*2-6L	3000PCS
FH4105	1.8~4.5	1.5	5.0~5.0	40.0	1000	PFM	96%	-	-	SOT-23-5L	3000PCS
FH4135	0.85~4.5	1.0	2.1~5.0	40.0	2000	PWM	96%	0.600	-	DFN2*2-6L	3000PCS
FH4139	0.6~5.5	1.5	5.0	40.0	1000	PWM/PFM	96%	0.600	-	SOT-23-6L	3000PCS
FH4202	2.2~5.5	3.0	~5.5	150.0	1200	Synchronous	94%	1.250	Y	ESOP-8L	2500PCS
FH4203	1.8~5.5	2.1	~5.5	20.0	1200	PWM	92%	0.500	-	DFN3*3-12L QFN4*4-16L	2500PCS
FH4204	2.0~24.0	3.0	~28.0	100.0	1200	PFM/PWM	93%	0.600	-	SOT-23-6L	3000PCS
FH4204B	2.5~5.5	3.0	3.2~5.3	100.0	1000	PFM/PWM	92%	0.600	-	SOT-23-6L	3000PCS
FH4204C	2.2~16.0	2.5	~20.0	100.0	1200	PFM/PWM	92%	0.600	-	SOT-23-6L	3000PCS
FH4204D	2.0~24.0	3.5	~24.0	100.0	1400	PFM/PWM	93%	0.600	-	SOT-23-6L	3000PCS

Part No.	Vin(V)	Load Current(A)	Vout(V)	I _{ss} (uA)	FOSC (KHz)	Control Mode	Efficiency	Vfb (V)	Power Good Output	Packaged	SPQ
FH4301	2.5~6.0	3.0	~20.0	60.0	1000	PFM/PWM	90%	1.250	-	SOT-23-6L	3000PCS
FH4302	1.8~5.0	3.0	~5.5	50.0	1000	PWM	97%	0.600	-	DFN3*3-12L	2500PCS
FH4303	1.8~5.0	3.0	~5.5	50.0	1000	PWM	97%	0.600	-	QFN3*3-16L	2500PCS
FH4400	0.9-6.5	4.0	~20.0	25.0	1000	PFM/PWM	90%	1.250	-	SOT-23-5L SOP-8L	3000PCS 1000PCS
FH47063	1.8~5.5	3.0	2.5~5.5	27.0	500	PWM	96%	1.200	Y	QFN2*2-10L	3000PCS
FH47065	1.8~5.5	5.0	2.5~5.5	27.0	500	PWM	96%	1.200	Y	QFN2*2-10L	3000PCS
FH47066	1.8~5.5	6.0	2.5~5.5	27.0	500	PWM	96%	1.200	Y	QFN2*2-10L	3000PCS
FH47304	3.0~33.0	4.0	~33.0	100.0	1000	PFM/PWM	95%	0.600	-	DFN3*3-10L	5000PCS
FH47177	2.7~12.0	7.0	~12.6	120.0	200~2.2MHz	PFM PSM(COT)	94%	1.200	-	QFN2.5*2.0-11L	3000PCS
FH47115	2.7-12.0	10.0	4.5~12.6	600.0	200~2.2MHz	PFM PSM(COT)	94%	1.200	Y	DFN4*4-20L	3000PCS
FH47120	2.8~16.0	10.0	~16.0	200.0	300~2.0MHz	PFM/PWM	97%	1.000	Y	QFN3*3-20L	5000PCS
FH47121	2.7~5.5	12.0	~24.0	140.0	600	PWM	91%	1.240	Y	ESOP-8L	2500PCS
FH47196	2.7~12.0	10.0	~13.0	400.0	400	PWM	93%	1.200	-	ESOP-8L	2500PCS
FH47215	3.0~16.0	15.0	~16.0	200.0	300	PWM	95%	1.000	Y	QFN4*4-18L	5000PCS
FH47315	3.0~30.0	15.0	~30.0	200.0	300	PWM	95%	1.000	Y	QFN4*4-18L	5000PCS
FH43050	2.7~20.0	10.0	4.5~20.0	54.0	2200	PWM	96%	1.200	Y	QFN3.5*3.0-13L	3000PCS
FH43052	2.7~20.0	10.0	4.5~20.0	54.0	2200	PWM	96%	1.200	Y	QFN3.5*3.0-13L	3000PCS

■ EN: Enable Control ■ OCP: Over Current Protection ■ UVLO: Under Voltage Lock Out ■ SCP: Short Circuit Protection ■ OTP: Over Temperature Protection

Part No.	Vin(V)	Iout(A)	Vout Range(V)	Iss(uA)	FOSC(KHz)	Mode	Efficiency	Vfb(V)	Packaged	SPQ
FH4502	2.6~6.0	1.0	0.6~6.0	40	1500	PWM	96%	0.600	DFN2*2-6L	3000PCS
FH4502B	2.6~5.5	1.0	0.6~6.0	40	1500	PWM	96%	0.600	DFN2*2-6L	3000PCS
FH4506	2.5~6.0	1.0	0.6~6.0	40	5500	PWM/PFM	95%	0.600	DFN2*2-6L	3000PCS
FH4507	2.5~5.5	1.2	0.6~6.0	40	1500	PWM/PFM	95%	0.600	DFN2*2-6L	3000PCS
FH4508	2.5~5.5	1.2	0.6~6.0	40	2300	PWM	94%	0.600	SOT-23-5L	3000PCS
FH4509	2.6~7.0	1.3	1.47~5.8	0.1	1500	PWM/PFM	96%	1.130	SOT-23-5L	3000PCS
FH4510	2.5~6.0	2.0	0.6~6.0	40	1000	PWM	96%	0.600	SOT-23-5L	3000PCS
FH4510B	2.6~5.5	1.5	2.6~5.5	50	2000	PWM	97%	0.600	SOT-23-5L	3000PCS
FH4510C	2.6~5.5	2.0	2.6~5.5	80	2000	PWM	97%	0.600	SOT-23-5L	3000PCS
FH4511	2.7~5.5	2.0	0.6~5.5	50	1000	PFM/ PGood	96%	0.600	SOT23-6L	3000PCS
FH4512	2.6~5.5	2.0	0.6~5.5	30	3000	PWM	96%	0.600	DFN2*2-8L	3000PCS
FH4513	2.6~5.5	2.0	0.6~5.5	30	3000	PWM	96%	0.600	SOT-23-5L	3000PCS
FH4520	2.7~5.5	3.0	0.6~5.5	50	1000	PWM/PGood	96%	0.600	SOT-23-6L	3000PCS
FH4523	2.6~5.5	3.5	0.45~5.5	50	1500	COT Sync.buck	95%	0.450	DFN2*2-8L	3000PCS
FH43113	2.7~5.5	3.5	0.6~5.5	50	1000	PFM / PGood	96%	0.600	DFN3*3-10L	5000PCS
FH4525	2.5~6.0	7.0	0.4~5.5	65	2100	COT Sync.buck	97%	0.72~1.5	CSP-20L	2500PCS

Part No.	Vin(V)	Iout(A)	Vout Range(V)	Iss(uA)	FOSC(KHz)	Mode	Efficiency	Vfb(V)	Packaged	SPQ
FH4682	4.5~18.0	2.0	0.8~15.0	600	600	PFM / Fast Response	93%	0.8/0.756	SOT-23-6L	3000PCS
FH4684	4.5~20.0	2.0	0.6~18.0	410	1000	PWM/PFM COT Sync.buc	96%	0.600	SOT-23-6L	3000PCS
FH4630	3.5~18.0	2.0	0.6~15.0	10	600	PWM/PFM	95%	0.600	SOT-23-6L	3000PCS
FH46301	4.0~18.0	2.0	0.6~16.0	4	1000	Force-PWM	96%	0.600	SOT-23-6L	3000PCS
FH4631	3.5~18.0	2.0	0.8~17.0	10	600	PWM/PFM	95%	0.800	SOT-23-6L	3000PCS
FH43484	4.5~18.0	3.0	0.923~17.5	10	500	PWM/PFM	95%	0.923	ESOP-8L	2500PCS
FH4635	4.5~18.0	3.0	0.6~12.0	300	500	COT Sync.buck	94%	0.600	SOT-23-6L	3000PCS
FH43207	4.2~16.0	4.0	1.0~14.0	500	500	PWM	95%	0.923	ESOP-8L	2500PCS
FH43255	4.5~18.0	5.0	1.2~15.0	340	600	PFM/Fast Response	94%	0.600	SOT-23-6L	3000PCS
FH43256	4.5~18.0	6.0	1.2~15.0	340	600	PFM / Fast Response	94%	0.800	DFN2*2-6L	3000PCS
FH4710	4.5~30.0	1.2	0.8~19.0	n/a	1400	PWM	96%	0.800	SOT-23-6L	3000PCS
FH4720	4.5~32.0	2.0	0.6~23.8	4.0uA	500	ECOT PSM	95%	0.6 / 0.8 / 0.765	SOT-23-6L	3000PCS
FH4711	4.5-30	2.0	0.95~28.0	n/a	500	PWM	96%	0.923	SOP-8L	3000PCS
FH33431	4.5-30	2.5	0.8~28.0	3.0uA	570	PWM	95%	0.800	SOP-8L	3000PCS
FH4712	4.5-30	3.0	0.8~21.5	380	340	PWM	96%	0.800	ESOP-8L	2500PCS
FH3330	4.5~30.0	3.0	0.6~26.0	60	500	ECOT PSM	93%	0.6 / 0.8 / 0.765/0.923	ESOP-8L	3000PCS
FH3343B	4.5-30	3.0	0.8~27.0	380	50k to 1.5M	PFM External COMP	95%	0.800	ESOP-8L	2500PCS
FH52620	4.2~28.0	5.0	ADJ	3.0uA	300K(ADJ)	PFM/PWM	93%	0.800	QFN4X4-14L	3000PCS

Part No.	Vin(V)	Iout(A)	Vout Range(V)	Iss(uA)	FOSC(KHz)	Mode	Efficiency	Vfb(V)	Packaged	SPQ
FH56001	4.5~36.0	10.0	ADJ	15	150~1200	PWM	96%	2.000	QFN4*4-20L	4000PCS
FH56002	6.5~36.0	3.1	0.5~34.0	100	100	PWM	95%	1.200	ESOP-8L	4000PCS
FH56003	6.5~36.0	3.1	0.5~33.8	100	300	PWM	95%	0.900	ESOP-8L	4000PCS
FH4811	4.75~40.0	0.8	ADJ	40uA	550	PWM/PFM	90%	0.800	SOT-23-6L	3000PCS
FH4816	4.5~40.0	1.5	4.0~ 36.0(ADJ)	40.0uA	800	PWM/PFM	95%	0.800	SOT-23-6L	3000PCS
FH4820	4.5~40.0	2.0			500	PWM/PFM		0.6/0.8/0.765	SOT-23-6L	3000PCS
FH4894	5.0~40.0	5.0	0.92~34.0	10	200	PWM	95%	0.920	ESOP-8L	3000PCS
FH48104	4.5~60.0	0.6	0.8~56.0	250	1200	PWM	92%	0.800	SOT-23-6L	3000PCS
FH48110	4.5~60.0	1.0			500	PWM/PFM		0.800	SOT-23-6L	3000PCS
FH4830	8.0~ 80.0	1.0	1.25~68.0	2.1mA	100	PWM	85%	1.250	ESOP-8L	2500PCS
FH4832	12.0~90.0	0.6	1.25~90	2.5mA	150	PWM	85%	1.250	ESOP-8L	2500PCS
FH89032	7.0~100.0	3.0	ADJ	400	50~500	PWM	97%	1.200	QFN5*5-32L	2500PCS
FH89086	5.0~100.0	2.0	ADJ	5.0uA	1000	PWM	90%	2.150	ESOP-8L	2500PCS
LM2576	4.5~45.0	3.0	ADJ	70	52	PFM	83%	1.230	TO-220-5 TO-263-5 ESOP-8L	2500PCS
LM2576H	4.5~60.0	3.0	ADJ	70	52	PFM	83%	1.230	TO-220-5 TO-263-5 ESOP-8L	2500PCS
LM2596	4.5~45.0	3.0	ADJ	70	150	PWM	90%	1.230	TO-220-5 TO-263-5 ESOP-8L	2500PCS
LM2596H	4.5~60.0	3.0	ADJ	70	150	PWM	90%	1.230	TO-220-5 TO-263-5 ESOP-8L	2500PCS

Part No.	Vin range(V)	Vout range(V)	Iout (Max)(A)	Topology	Type	FOSC (KHz)	Iq (Typ)(mA)	Current limit (Typ)(A)	Efficiency(%)	Packaged	SPQ
FH3440	1.8~5.5	1.8~5.5 (ADJ)	1.0	Buck-Boost	Converter	350~1500	1.00	1.5	95%	MSOP-10L	4000PCS
FH3440B	1.8~5.5	1.8~5.5 (ADJ)	1.0	Buck-Boost	Converter	350~1500	1.00	1.5	95%	SOP-8L	3000PCS
FH3440D	2.5~5.5	1.2~5.0 (ADJ)	1.2	Buck-Boost	Converter	1700	0.16	2.0	95%	DFN3*3-10L	5000PCS
FH3441	1.8~5.0	1.2~5.0 (ADJ)	0.6	Buck-Boost	Converter	1000	0.70	1.1	95%	DFN2*2-8L	3000PCS
FH39701	2.6~5.5	ADJ	1.2	Buck-Boost	Converter	1000	0.60	4.0	96%	DFN3*3-14L	5000PCS
FH39702	2.6~5.5	ADJ	2.0	Buck-Boost	Converter	1000	0.60	5.0	96%	DFN3*3-14L	5000PCS
FH35500	3.5~32.0	2.0~30.0	20.0	Buck-Boost	Controller	150~1200	15.00	n/a	94%	QFN4*4-32L	4000PCS
FH35501	3.5~32.0	2.0~30.0	20.0	Buck-Boost	Controller	150~1200	15.00	n/a	94%	QFN4*4-32L	4000PCS

Part No.	Vin (V)	Iout (mA)	Vout (V)	Accu	IQ	PSRR(dB)	VDRPOUT(Typ.)	Features	Packaged	SPQ
FH6115	1.8~5.5	300	1.5~5.0	±2%	8.0uA	50	0.2V @ 100mA	SCP/ OCP	SOT-23-3L	3000PCS
FH6118	1.5~6.0	300	ADJ	±1.5%	30uA	50	300mV @ 100mA (3.0V type)	EN / SCP / OCP	SOT-23-5L SOT-23-6L	3000PCS
FH6120	1.2~6.5	500	1.2~5.0	±2%	50.0uA	70	100mV@ 100mA	EN / SCP	SOT-23-5L SOT343R DFN2*2-6L	3000PCS
FH6121	2.0~7.0	700	1.5~5.0	±2%	30.0uA	60	50mV @ 100mA (3.0V type)	EN / SCP	SOT-89-5L SOT-23-5L	1000PCS 3000PCS
FH6123	2.0~7.0	300	1.0~5.0	±2%	70.0uA	65	300mV @ 100mA (3.0V type)	EN / SCP	SOT-353/SC70-5L SOT-343 DFNWB1x1-4L	3000PCS
FH6124	1.8~6.0	250	1.2~5.0	±2%	2.0uA	40	160mV @ 100mA (3.0V type)	LOW IQ / EN / SCP	SOT-23-3L SOT-23-5L	3000PCS 3000PCS
FH6125	2.0~5.5	250	1.2~5.0	±2%	0.8uA	35	200mV @ 100mA (3.0V type)	LOW IQ / EN / SCP / OCP	SOT-23-3L SOT-23-5L	3000PCS 3000PCS
FH6126	2.0~7.0	300	0.9~5.0	±2%	60.0uA	60	180mV @ 100mA (3.0V type)	EN / SCP	SOT-23-5L DFN1*1-4L	3000PCS 10000PCS
FH6127	1.8~5.0	300	0.85~1.8	±2%	50.0uA	60	300mV @ 100mA (1.5V type)	EN / SCP	SOT-23-5L	3000PCS
FH6128	1.5~7.0	400	1.20 ~ 5.00	±2%	0.1uA	45	180mV @ 100mA (3.0V type)	EN / SCP	SOT-23-3L SOT-23-5L DFN1*1-4L	3000PCS
FH6130	2.0~6.0	500	1.2~5.0	±2%	40.0uA	70	100mV @ 100mA (3.0V type)	EN / SCP	SOT-23-5L	3000PCS
FH6134	2.0~7.0	500	1.0~5.0	±1.5%	0.3uA	70	100mV @ 100mA (3.3V type)	LOW IQ / EN / SCP / OCP	SOT-23-3L SOT-23-5L SOT-89-3L	3000PCS 1000PCS
FH6206	1.8~6.0	300	1.5V~5.0	±2%	2.0uA	45	160mV @ 100mA (3.0V type)	SCP / OCP	SOT-89-3L	1000PCS
FH6216	1.8~7.0	500	1.5V~6.0	± 2%	8.0uA	50	500mV @ 500mA (3.3V type)	IQ/EN/SCP/OCP	SOT-89-3L SOT-23-6L	1000PCS 3000PCS
FH6226	2.0~7.0	300	1.5~5.5	± 2%	60.0uA	55	250mV typ. (3.0V,IOUT=100mA)	SCP/OCP	SOT-89-3L SOT-23-3L	1000PCS 3000PCS
FH6236	1.8~7.0	300	1.2~6.0	± 2%	8.0uA	50	160mV @ 100mA (3.0V type)	SCP/OCP	SOT-89-3L SOT-23-3L	1000PCS 3000PCS
FH6246	~7.0	300	1.2~6.0	± 2%	5.0uA	50	160mV @ 100mA (3.3V type)	SCP/OCP	SOT-89-3L SOT-23-3L	1000PCS 3000PCS

Part No.	Vin (V)	Iout (mA)	Vout (V)	Accu	IQ	PSRR(dB)	VDROPOUT(Typ.)	Features	Packaged	SPQ
FH62626	2.7~6.0	1000	2.5~5.0	±1%	1.7uA	53	0.3V at 1000mA	EN / SCP / OCP	eSOP-8L	4000PCS
FH62828	5.5~7.0	1000	5.0	±1%	1.7uA	53	0.3V at 1000mA	EN / SCP / OCP	eSOP-8L	4000PCS
FH6100L	~18.0	150	2.5~5.0	±2%	2.0uA	65	0.26V at 100mA	SCP/OCP	SOT-23-3L SOT-89-3L	3000PCS 1000PCS
FH6101	~18.0	150	3.0~5.0	±2%	2.5uA	50	100mV @ Iout=1mA	EN/OCP/SCP/OTP	SOT-89-3L SOT-23-3L SOT-23-5L	1000PCS 3000PCS 3000PCS
FH6102	~18.0	500	1.5~7.0	±2%	2.0uA	40	0.26V@100mA &VOUT=3.3V	EN/OCP/SCP/OTP	SOT-89-3L SOT-23-3L SOT-23-5L	1000PCS 3000PCS 3000PCS
FH6103	~15.0	50	2.1~5.0	±2%	1.5uA	40	30mV @ IOU =1mA & VOUT =3.3V	SCP/OCP	SOT-23-3L SOT-89-3L	3000PCS 1000PCS
FH6111	~18.0	300	1.5~5.0	±2%	5.0uA	50	0.16V at 100mA &0.32V at 200mA	EN / SCP / OCP	SOT-23-5L	3000PCS
FH6112	2.5~18.0	400	1.2~5.0	±2%	60.0uA	60	104mV@ IOU=100mA	EN/OCP/ SCP/OTP	SOT-89-3L SOT-23-5L	1000PCS 3000PCS
FH6221	2.8~18.0	400	ADJ=1.25	±2%	45.0uA	60	125mV@ IOU=100mA (Vout=3.3V)	EN / SCP	SOT-23-5L	3000PCS
FH6222	2.8~18.0	400	ADJ=0.8V	±2%	45.0uA	60	125mV@ IOU=100mA (Vout=3.3V)	EN / SCP/ OCP / OTP	SOT-23-5L	3000PCS
FH6100	1.8~28.0	70	1.8~5.0	±2%	2.5uA	40	100mV @ Iout=1mA	EN/OCP/ SCP/OTP	SOT-89-3L SOT-23-3L SOT-23-5L	1000PCS 3000PCS 3000PCS
FH6328	~30.0	150	2.1~12.0	±1% ±2%	0.8uA	40	350mV (@50mA)	LOW IQ / SCP	SOT-89-3L	1000PCS
FH6329	~30.0	250	2.1~12.0	±1%	1.8uA	50	125mV	LOW IQ / SCP	SOT-89-3L	1000PCS

● EN: Enable Control

● SCP: Short Circuit Protection

● OTP: Over Circuit Protection

● LOW IQ: Low Quiescent Current

● DCS: Discharge Shunt

Linear Regulator(Dual LDO) | 多通道輸出穩壓調節芯片

Part No.	Iout (mA)	Vin (V)	Vout (V)	Accu	IQ	PSRR (dB)	Features	Packaged	SPQ
FH6401	300	2.0-7.0	1.2~5.0	±2%	120	70	EN/High PSRR/SCP	SOT-23-6L	3000PCS
FH6402	300	2.0-7.0	1.5~5.0	±2%	120	70	EN/High PSRR/SCP	SOT-23-6L	3000PCS

■ EN: Enable Control ■ OCP: Over Current Protection ■ UVLO: Under Voltage Lock Out ■ SCP: Short Circuit Protection ■ OTP: Over Temperature Protection ■ OTP: Over Temperature Protection ■ LOW IQ: Low Quiescent Current ■ DCS: Discharge Shunt

Three Terminal Positive Regulators | 三端穩壓芯片

Part No.	VIN (V)(max)	Output Voltage (V)	Output Current (A)	Dropout Voltage (V)	Output Accuracy	IQ (mA)(typ)	Junction temperature range(°C)	Package	SPQ
FH78xx	35	12,15,18,24,5,6,8,9	1.5	2	±5%	3	-40 ~ 125	TO-220-3L	50PCS/Tube
FH78Lxx	30	10,12,15,18,24,3.3,5,6,8,9	0.1	1.7	±5%	3	-40 ~ 125	SOT-89-3L	1000PCS/Reel
FH78Mxx	35	10,12,15,24,5,6,8,9	0.5	2	±5%	1.5	-40 ~ 125	TO-220-3L	50PCS/Tube
FH79xx	-35	-12,-15,-5,-8	1.5	1.1,1.4	2,4	3	-40 ~ 125	TO-220-3L	50PCS/Tube
FH79Lxx	-30	-12,-15,-5,-8	0.1	1.7	4	6	-40 ~ 125	SOT-89-3L	1000PCS/Reel

Part No.:	Vin(V)	Final Vbat(V)	Battery Type	Max.Charge Current	Architecture	Control Interface	NTC Monitor (Y/N)	#of Cells	IQ	FSW(MHz)	Packaged	SPQ
FH4053	4.25~6.5	4.20V 3.65V	Li-Ion LiFePO4	1000	Linear	Standalone	Y	1	25uA	N/A	ESOP-8L	2500PCS
FH4056	4.00~8.0	4.20V 4.35V	Li-Ion Li-Polymer	1000	Linear	Standalone	Y	1	55uA	N/A	ESOP-8L	2500PCS
FH4056C	4.25~6.5	4.20V	Li-Ion	1000	Linear	Standalone	N	1	40uA	N/A	ESOP-8L	2500PCS
FH4058	4.40~6.0	3.63V (ADJ)	LiFePO4	1100	Linear	Standalone	Y	1	3.0uA	N/A	ESOP-8L	4000PCS
FH4063	4.40~6.0	4.20V (ADJ)	Li-Ion	1100	Linear	Standalone	Y	1	3.0uA	N/A	ESOP-8L	4000PCS
FH4063D	4.40~6.0	4.20V (ADJ)	Li-Ion	1100	Linear	Standalone	Y	1	3.0uA	N/A	DFN3*3-8L	5000PCS
FH4064	4.00~9.0	4.20V 4.35V	Li-Ion Li-Polymer	800	Linear	Standalone	N	1	55uA	N/A	DFN2*2-6L	3000PCS
FH4065	4.25~12.0	4.20V	Li-Ion	500	Linear	Standalone	N	1	40uA	N/A	SOT-23-5L SOT-89-5L	3000PCS
FH4066	3.8~6.0	4.20V	Li-Ion	800	Linear	Standalone	N	1	25uA	N/A	SOP-8L	2500PCS
FH4055	4.25~6.5	4.20V	Li-Ion	800	Linear	Standalone	N	1	45uA	N/A	SOT-23-5L	3000PCS
FH5001	4.25~6.5	4.20V	Li-Ion	300	Linear	Standalone	N	1	25uA	N/A	SOT-23-5L	3000PCS
FH5002	4.25~6.5	4.20V	Li-Ion	700	Linear	Standalone	N	1	25uA	N/A	SOT-23-5L	3000PCS
FH5002L	4.25~6.5	4.20V	Li-Ion	500	Linear	Standalone	N	1	25uA	N/A	SOT-23-5L	3000PCS
FH5005	4.25~6.5	4.20V	Li-Ion	500	Linear	Standalone	N	1	25uA	N/A	SOT-23-6L	3000PCS
FH5006	4.25~6.5	4.20V	Li-Ion	100	Linear	Standalone	N	1	25uA	N/A	SOT-553 SOT-23-5L	3000PCS
FH5101	4.5~6.0	4.35V	Li-Polymer	700	Linear	Standalone	N	1	48uA	N/A	SOT-23-5L	3000PCS

Part No.:	Vin(V)	Final Vbat(V)	Battery Type	Max.Charge Current	Architecture	Control Interface	NTC Monitor (Y/N)	#of Cells	IQ	F5W(MHz)	Packaged	SPQ
FH5202	4.0~8.0	4.20V	Li-Ion	2000	Switching Buck	Standalone	Y	1	140uA	1.50	SOP-8L MSOP-8L	2500PCS
FH5204	4.7-5.5	4.20V 4.35V	Li-Ion Li-Polymer	2000	Switching Buck	Standalone	Y	1	1uA	1.00	ESOP-8L	2500PCS
FH5205	4.3~6.5	4.20V	Li-Ion	2500	Switching Buck	I2C, Standalone	Y	1	70uA	3.00	ESOP-8L	2500PCS
FH5206	4.3~6.5	4.20V	Li-Ion	2500	Switching Buck	I2C, Standalone	Y	1	70uA	3.00	QFN3*3-16L	2500PCS
FH5207	~12.0V	4.20V/4.35V/3.6V	Li-Ion Li-Polymer LiFePO4	2000	Switching Buck	Standalone	Y	1	80uA	0.80	ESOP-8L QFN4*4-16L	2500PCS 5000PCS
FH5301	4.3~6.5	4.35V	Li-Polymer	2500	Switching Buck	I2C, Standalone	Y	1	70uA	3.00	ESOP-8L	2500PCS
FH5302	4.3~6.5	4.35V	Li-Polymer	2500	Switching Buck	I2C, Standalone	Y	1	70uA	3.00	QFN3*3-16L	2500PCS
FH5304	4.0~6.0	4.20V	Li-Ion	2500	Switching Buck	Standalone	Y	1	20.0uA	0.55	DFN3*3-10L	5000PCS
FH5305	4.6~26.0	4.20V	Li-Ion	2500	Switching Buck	Standalone	Y	1	20.0uA	0.55	DFN3*3-10L	5000PCS
FH5306	4.0~6.0	4.20V	Li-Ion	3000	Switching Buck	Standalone	Y	1	70uA	0.80	ESOP-8L	2500PCS
FH5330	4.0~28.0	ADJ	Li-Ion LiFePO4	25.0W	Switching PFM Boost	Standalone	N	1~5	10uA	1.00	SOT-23-6L	3000PCS
FH5401	7.5~28	8.40V	Li-Ion	5000	Switching Buck	Standalone	Y	2	15uA	0.30	TSSOP-16L	2500PCS
FH5402	6.6~30	ADJ	Li-Ion LiFePO4	4000	Switching Buck	Standalone	Y	2	10uA	0.31	SSOP-10L	3000PCS
FH5403	8.9~20	4.20/8.40/12.6V	Li-Ion	2000	Switching Buck	Standalone	Y	1~3	10uA	0.50	SOP-8L	2500PCS
FH5404	6.0~20.0	4.2V 8.4V	Li-Ion	2000	Switching Buck	Standalone	Y	2	10uA	0.45	SOP-8L	2500PCS
FH5405	10.0~16.0	8.4V 12.6V	Li-Ion	2000	Switching Buck	Standalone	Y	2/3	6.0uA	0.53	ESOP-8L	2500PCS
FH5406	6.6~ 30.0	12.60V	Li-Ion	4000	Switching Buck	Standalone	N	3	10uA	0.30	SSOP-10L	3000PCS
FH5408	3.0~20.0	12.60V	Li-Ion	1000	Switching Boost	I2C, Standalone	Y	3	2.3uA	0.65	QFN4*4-16L	5000PCS

Part No.:	Vin(V)	Final Vbat(V)	Battery Type	Max.Charge Current	Architecture	Control Interface	NTC Monitor (Y/N)	#of Cells	IQ	FSW(MHz)	Packaged	SPQ
FH5411	9.2~13.0	8.40V	Li-Ion	1000	Linear	I2C, Standalone	Y	2	0.26mA	N/A	SOP-8L	2500PCS
FH5411A	8.9-20.0	8.40V	Li-Ion	1500	Linear	Standalone	Y	2	20.0uA	N/A	SOP-8L	2500PCS
FH5412	2.7~6.5	8.40V	Li-Ion	4000	Switching PFM Boost	Standalone	N	2	14.0uA	1.00	SOP-8L	4000PCS
FH5413	2.7~6.5	16.80V	Li-Ion	3000	Switching PFM Boost	Standalone	Y	4	18.0A	1.00	SOP-8L	4000PCS
FH5465	6.6~30.0	..	Li-Ion LiFePO4	4000	Switching Buck	Standalone	N	1~5	10.0uA	0.31	SSOP-10L	4000PCS
FH55082	3.6~7.0	8.40V	Li-Ion	2000	Switching Boost	Standalone	Y	2	1.0mA	0.60	ESOP-8L	2500PCS
FH56924	4.0~14.0	4.2V 8.4V	Li-Ion	2500	Switching Buck	I2C, Standalone	Y	2	10uA	0.50	QFN3*3-16L	5000PCS
FH53600	2.7~6.5	1.46V	LiFePO4	1190	Switching PFM Buck	I2C, Standalone	N	1	6.0uA	0.50	ESOP-8L	4000PCS
FH53601	2.7~6.5	1.90V	LiFePO4	1190	Switching PFM Buck	I2C, Standalone	Y	1	6.0uA	0.50	SSOP-10L	4000PCS
FH53085	3.8~6.5	3.20V	LiFePO4	1000	Linear	Standalone	Y	4	3.0uA	N/A	ESOP-8L	4000PCS
FH53387	2.7~6.5	18.0V	LiFePO4	35.0W	Switching PFM Boost	I2C, Standalone	N	4~12	5.8uA	1.00	SSOP-10L	4000PCS

Battery Balance IC | 電池充電平衡晶片

Part No.	VDD	Overcharge Detection Voltage VCU	Overcharge Release Voltage VCR	Overcharge Detection Delay Time TOC	Operation Temperature Range	Packaged	SPQ
FH52213	1.5~8.0V	4.00~4.50V	3.80~4.50V	250ms	-40°C~+85°C	SOT-23-6L	3000PCS
FH53341	1.5~8.0V	4.18~4.22V	4.16~4.21V	220ms	-40°C~+85°C	SOT-23-5L	3000PCS

Battery Indication IC | 電池電量計晶片

Part No.	Cell chemistry	#of Cells	Voltage Detection Accuracy	Communication interface	Battery capacity (Max)(mAh)	Implementation	External capacity indication	IQ	Operating Temperature range	Package	SPQ
FH5060	Li-Ion/Li-Polymer	Single Cell	±1%	I/O	/	Pack, System	LED	10.0uA	-20 ~ 85°C	SOT-23-6L	3000PCS/Reel

Charger Pump | 電荷泵式升壓器

Part No.	Vin	Vout	Regulated	Iout	ISHDN	Eff.	Frequency	CH	SHDN	Package	SPQ
FH3200	1.8~5.5V	5.0V	±4%	120	1.0uA	92%	750KHz	1	Y	SOT-23-6L	3000PCS
FH3200A	1.8~5.5V	5.0V	±3%	250	1.0uA	78%	360KHz	1	Y	SOT-23-6L	3000PCS
FH4004A	2.7~5.0V	5.0V 3.3V	±2.5%	350mA	1.0uA	81%	360KHz	1	Y	SOT-23-6L	3000PCS
FH4004C	1.8~5.0V	3.3V	±4%	250mA	1.0uA	83%	1200KHz	1	Y	SOT-23-6L	3000PCS
FH4004D	2.5~5.0V	ADJ (2.5~5.0V)	-	350mA	1.0uA	85%	400KHz	1	Y	TSOT-23-6L	3000PCS
FH7660	1.5~10.0V	+5.0V ±5.0V	99.99%	-	20uA	98%	10KHz	1	-	SOP-8L	2500PCS
FH7661	-18.0/3~0.5(3x) -8.5~0.5(2x)	-18.0	-	-	2.0uA	95%	30KHz	2	-	SOP5-14L SOP-16L	2500PCS

Part No.	VOCP(V)	VOCR(V)	VODP(V)	VODR(V)	Iout Max.	VOI(mV)	#of Cell	0V Changing	Rsson(kΩ)	Package	SPQ
FH3303	4.300	4.100	2.400	3.000	2.1A	50	1	Y	56	SOT-23-3L	3000PCS
FH7001	4.280	4.080	2.400	2.500	2.5A	150	1	-	49	SOT-23-6L	3000PCS
FH7002	3.5~4.7	4.7~3.5	3.5~2.0	2.0~3.5	-	15	1	Y	-	SOT-23-6L	3000PCS
FH7003	4.280	4.080	2.750	2.500	2.8A	150	1	-	49	SOT-23-5L	3000PCS
FH7003A	4.300	4.100	2.400	3.000	3.3A	50	1	-	45	SOT-23-5L	3000PCS
FH7007	4.300	4.100	2.400	3.000	2.5A	25	1	Y	40	SOT-23-6L	3000PCS
FH7008	4.425	4.250	2.900	3.000	2.5A	25	1	Y	40	SOT-23-6L	3000PCS
FH7013	4.300	4.100	2.400	3.000	5.0A	50	1	Y	15	CPS-5L	15000PCS
FH7014	4.425	4.250	2.400	3.000	5.0A	50	1	Y	15	CPS-5L	15000PCS
FH7015	4.300	4.100	2.400	3.000	6.0A	50	1	Y	16	DFN3*3-10L	2500PCS
FH7016	4.425	4.250	2.400	3.000	6.0A	25	1	Y	20	DFN3*3-10L	2500PCS
FH7017	4.425	4.250	2.900	3.000	6.0A	25	1	Y	20	DFN2*3-8L	3000PCS
FH7019	4.300	4.100	2.400	3.000	8.0A	50	1	Y	9	DFN3*3-10L	2500PCS
FH7020	4.425	4.250	2.400	3.000	8.0A	25	1	Y	9	DFN3*3-10L	2500PCS
FH7110	4.2~4.55	/	2.4~3.0	2.4~3.0	1.2A	100	1	Y	56	DFN1.5*2-6L	3000PCS
FH7201	4.1~4.5	3.9 ~ 4.3	2.0~3.2	2.3~3.4	-	30	2	Y	45	SOT-23-6L	3000PCS
FH7202	3.5~4.4	3.2~4.3	2.0~2.9	2.5~3.0	-	15	2	Y	40	SOT-23-6L	3000PCS
FH7300	3.5~4.4	3.47~4.05	2.32~2.70	2.58~3.00	-	15	3	-	30	SOP-8L	4000PCS
FH7301	4.425	4.050	2.700	3.100	-	50	3	Y	5	SSOP-16L	2500PCS
FH7401	3.5~4.4	3.56~4.15	2.2~2.75	2.58~3.00	-	15	4	-	72	SOP-16L	2500PCS
FH7089	~6.0	4.250	4.100	3.000	10	50	1	Y	20	ESOP-8L	4000PCS

Part Number	Vin(V)	Operating Current	Crystal frequency	Operating clock frequency(Max.)	RAM	Interface	Operating Temperature Range	Packaged Type	SPQ
FH8563	1.8~5.5	0.80mA	32.768KHz	400KHz	16*8	IIC	-45~85(°C)	SOP-8L MSOP-8L	2500PCS/Reel 3000PCS/Reel
FH85163	1.0~5.5	0.80mA	32.768KHz	400KHz	16*8	IIC	-45~85(°C)	SOP-8L TSSOP-8L MSOP-8L	2500PCS/Reel 3000PCS/Reel
FH1302	1.3~5.5	1.20mA	32.768KHz	2.0MHz	31*8	Serial 3-Wire	-45~85(°C)	SOP-8L	2500PCS/Reel
FH1307	4.5~5.5	0.20mA	32.768KHz	100KHz	56*8	IIC	-45~85(°C)	SOP-8L	2500PCS/Reel
FH1381	2.0~5.5	0.30mA	32.768KHz	2.0MHz	31*8	Serial 3-Wire	-45~85(°C)	SOP-8L ESOP-8L	2500PCS/Reel
NE555	~18.0	40uA	f =0.7/RC	1.0MHz	/	CMOS/TTL	-45~85(°C)	SOP-8L	2500PCS/Reel

Part NO.	Voltage Range(V)	VM(V)	Output Current(A)	Rdson (HS+LS) (mΩ)	Control Interface	Built-in Charge Pump	Operating temperature range(°C)	Packaged	SPQ
FH8118	2.7~7.2	2.7~7.2	1.4	550	1*PWM	No	-20.0~85.0	SOT23-6L	3000PCS
FH8118S	2.4~7.2	2.7~7.2	1.8	530	1*PWM	No	-20.0~85.0	SOP-8L	2500PCS
FH83131	1.8~6.0	1.8~6.0	1.2	480	1*PWM	No	-40.0~85.0	SOT-23-6L	3000PCS
FH8351	1.8~6.0	1.8~6.0	1.2	480	2*PWM	No	-40~85.0	SOT-23-6L DFN2*2-8L	3000PCS
FH8208	4.5~15.0	2.4~7.2	1.5	530	1*PWM	No	-20.0~85.0	SOP-8L	2500PCS
FH8209	1.8~12.0	1.8~7.0	1.5	650	1*PWM	Yes	-20.0~85.0	SOP-8L	2500PCS
FH8837A	1.5~5.5	1.5~12.0	1.2	285	1*PWM	Yes	-40.0~85.0	SOP-8L DFN2*2-8L	2500PCS
FH8837B	1.5~5.5	1.5~12.0	1.8	285	1*PWM	Yes	-40.0~85.0	DFN2*2-8L	5000PCS
FH8838	2.0~7.0	1.8~12.0	1	520	1*PWM	Yes	-40.0~85.0	DFN2*2-8L	5000PCS
FH8870	6.8~45.0	6.8~45.0	1.5	660	2*PWM	Yes	-40.0~85.0	ESOP-8L	3000PCS
FH8871	6.5~45.0	6.5~45.0	3.6	565	2*PWM	Yes	-40.0~85.0	ESOP-8L	3000PCS
FH8872	3.0~25.0	n/a	4.2	91	1*PWM	No	-25.0~85.0	SOP-8L	3000PCS

Part No.	Vin Range (V)	Vout (V)(max)	ISW Limit(mA)	FOSC	LED Num.	Shutdown Current(uA)	VFB	Topology	Dimming Control	Operating temperature range	Package	SPQ
FH2115	3.6~6.0	~28.0	300	1.5MHz	7*3	1.0uA	0.25V	Boost	PWM	-40 ~ 85°C	SOT-23-6L	3000PCS
FH2120	3.0~6.0	~26.0	2500	1.2MHz	17*3	1.0uA	0.20V	Boost	PWM	-40 ~ 85°C	SOT-23-6L	3000PCS
FH2121	2.0~6.0	2.0~6.0	800	1.4MHz	1	1.0uA	0.10V	Buck	PWM/PFM	-40 ~ 85°C	SOT-23-5L	3000PCS
FH2121B	2.5~5.5	2.5~5.5	1200	1.5MHz	1	1.0uA	0.10V	Buck	PWM/PFM	-40 ~ 85°C	SOT-23-5L	3000PCS
FH2122	2.5~5.5	~30.0V	1600	1.1MHz	8	3.0uA	0.25V	Boost	PWM	-40 ~ 85°C	TSOT-23-6L SOT-23-6L	3000PCS
FH2124	2.5~5.5	~30.0V	1000	1.1MHz	3*13	3.0uA	0.20V	Boost	PWM	-40 ~ 85°C	TSOT-23-6L SOT-23-6L	3000PCS
FH2125	3.0~24.0	~28.0	2000	1.2MHz	7	1.0uA	0.20V	Boost	PWM	-40 ~ 85°C	SOT-23-6L	3000PCS
FH2126	2.5~5.5	~5.0	2000	1.0MHz	1*3W	3.0uA	0.95V	Boost	PWM	-40 ~ 85°C	SOT-23-6L	3000PCS
FH2127	2.5~5.5	~40.0V	1600	1.2MHz	10	1.0uA	0.10V	Boost	PFM/PWM	-40 ~ 85°C	SOT-23-5L	3000PCS
FH2128	2.5~5.5	~30.0V	600	1.2MHz	5	0.1uA	1.23V	Boost	PWM	-40 ~ 85°C	SOT-23-5L	3000PCS
FH2129	2.7~5.5	~38.0V	1500	1.1MHz	1*10	0.1uA	0.20V	Boost	PWM	-40 ~ 85°C	TSOT-23-6L SOT-23-6L	3000PCS
FH2130	2.0~6.0	~24.0V	1600	3.0MHz	4*10	1.0uA	0.20V	Boost	PWM	-40 ~ 85°C	SOT-23-6L	3000PCS
FH5361	2.8~5.5	~42.0V	1650	0.85MHz	3*13	0.1uA	0.20V	Boost	PWM	-40 ~ 85°C	DFN2*2-6L	3000PCS
FH5661	2.7~5.5	~37.0V	1300	1.1MHz	3*13	0.1uA	0.20V	Boost	PWM	-40 ~ 85°C	SOT-23-6L DFN2*2-6E	3000PCS
FH5662	2.7~5.5	~37.0V	1300	1.1MHz	3*13	0.1uA	0.30V	Boost	PWM	-40 ~ 85°C	SOT-23-6L TSOT-23-6L DFN2*2-6L	3000PCS
FH5663	2.7~5.5	~38.0	1500	1.1MHz	1*10	0.1uA	0.20V	Boost	PWM	-40 ~ 85°C	DFN2*2-6L	3000PCS
FH5668	2.7~21.0	~30.0V	3500	1.2MHz	8*15	50uA	0.50V	Boost	PWM	-40 ~ 85°C	DFN3*3-10L	5000PCS
FH5669	2.8~30.0	~30.0V	4000	20K~1.0MHz	8	10.0uA	0.20V	Boost	PWM	-40 ~ 85°C	DFN3*3-10L	5000PCS

Part No.	Vin Range (V)	Vout(V)(max)	ISW Limit(mA)	FOSC	LED Num.	Shutdown Current(uA)	VFB	Topology	Dimming Control	Operating temperature range	Package	SPQ
FH5630	6.0~28.0	~100.0	400	0.12MHz	25	1.0uA	0.40V	Boost	PWM	-40 ~ 85°C	ESOP-8L	2500PCS
FH5630C	6.0~28.0	~100.0	2000	0.12MHz	25	1.0uA	0.40V	Boost	PWM	-40 ~ 85°C	SOP-8L	2500PCS
FH5648	2.2~6.0	~26.0	3000	800KHz	8*15	20.0uA	0.20V	Boost	PWM	-40 ~ 85°C	ESOP-8L	4000PCS
FH5647	2.2~6.0	~26.0	3000	800KHz	8*15	20.0uA	0.20V	Boost	PWM	-40 ~ 85°C	DFN3*3-8L	5000PCS
FH2305B	0.8~5.5	~24.0	2500	700KHz	3*8	76uA	0.46V	Boost	PWM	-35~ 130°C	SOT-23-6L	3000PCS
FH2219	0.9~4.5	3.6V~3.74V	750	165KHz	1	~	0.10V	Boost	PFM	-40 ~ 85°C	SOT-23-6L	3000PCS
FH2221	2.0~5.0	n/a	300	40KHz	~	1.0uA	0.10V	n/a	Linear	-40 ~ 85°C	SOT-23-6L	3000PCS
FH2222	2.0~7.0	n/a	1000	5KHz	1	1.0uA	1.00V	n/a	Linear	-40 ~ 85°C	ESOP-8L	2500PCS

LED Lighting Drive | LED照明驅動

Part No.	Vin(V)	Iout(mA)	FOSC	LED Num.	Shutdown Current(uA)	Light Control	Topology	Operating temperature range	Package	SPQ
FH2305	3.6~100.0	1000	1.0MHz	~	200uA	PWM Dimming	Boost	-20 ~ 85°C	SOP-8	2500PCS
FH2700	3.2~60.0	6000	1.0MHz	~	200uA	PWM Dimming	Boost	-20 ~ 85°C	ESOP-8L	2500PCS
FH29910	10.0~600.0	1000	300kHz	~	500uA	PWM Dimming	Buck/Boost	-40 ~ 85°C	SOP-8	3000PCS
FH7136	2.7~7.0	3000	~	~	80uA	PWM Dimming	Linear	-20 ~ 85°C	SOT-89-5L	1000PCS
FH7138	2.7~7.0	3000	~	~	60uA	PWM Dimming	Linear	-20 ~ 85°C	SOT-89-5L SOT-23-5L	1000PCS 3000PCS

Part No.	Vin Range	Max. Resolution Segment × Comm	LCD Voltage	Bias	Gray Scale	Serial Data	Built-in OSC.	Ext. Crystal	Operating temperature range (°C)	Package
HT1620	2.4V~3.3V	32×4, 32×3, 32×2	3/2V _{DD}	1/2, 1/3	--	1	--	√	-40~85	LQFP-64L
HT1621	2.4V~5.2V	32×4, 32×3, 32×2	≤V _{DD}	1/2, 1/3	--	1	√	√	-40~85	LQFP-44L SSOP-48L LQFP-48L
HT1622	2.7V~5.2V	32×8	≤V _{DD}	1/4	--	1	√	--	-40~85	LQFP-44L LQFP-64L

■ Darlington Driver | 达林顿驱动

Part No.	Drivers per package	Switching voltage (Max)(V)	Output voltage (Max)(V)	Peak output current (mA)	Delay time (Typ)(ns)	Input compatibility	Vol @ lowest spec current (Typ)(mV)	Iout/ch (Max)(mA)	Iout_off (Typ)(uA)	I _{max} (A)	FET	Operating temperature range(°C)	Package
ULN2803A	8	50	50	500	130	CMOS, TTL	900	500	50	0.5	Internal	-30 to 105	SOP-18L
ULN2003AI	7	50	50	500	250	CMOS, TTL	900	500	50	0.5	Internal	-30 to 105	SOP-16L TSSOP-16L
ULN2003A	7	50	50	500	250	CMOS, TTL	900	500	50	0.5	Internal	-40 to 85	SOP-16L TSSOP-16L
ULN2004A	7	50	50	500	250	CMOS	900	500	50	0.5	Internal	-40 to 85	SOP-16L TSSOP-16L

Part No.	Vin(V)	VDET	Accu	IQ	Output Type	Delay Time	Packaged	SPQ
FH2800	0.7~8.0	1.5~7.0	±1%	4.0uA	NMOS CMOS	N	SOT-23-5L SOT-353	3000PCS 3000PCS
FH2801	0.7-7.0	1.5~6.0	±2%	2.0uA	NMOS CMOS	N	SOT-23-3L	3000PCS
FH2802	0.7-7.0	1.5~5.0	±2%	2.0uA	NMOS CMOS	1ms~50ms 50ms~200ms 80ms~400ms	SOT-23-3L SOT-89-3L	3000PCS 1000PCS
FH2803	0.7~7.0	1.5~5.0	±2%	1.5uA	NMOS	1ms~50ms 50ms~200ms 80ms~400ms	SOT-143	3000PCS
FH2805	0.7-7.0	1.0~6.5	±1%	0.9uA	CMOS	200ms	SOT-23-3L	3000PCS
FH2806	0.7-7.0	1.0~6.5	±1%	0.9uA	NMOS	200ms	SOT-23-3L	3000PCS
FH2807	0.7-7.0	1.0~7.0	±1%	0.6uA	CMOS	Adjustable	SOT-23-5L	3000PCS
FH2808	0.7-7.0	1.0~7.0	±1%	0.6uA	NMOS	Adjustable	SOT-23-5L	3000PCS
FH2816	-0.3-22.0	2.0~7.0	±2.4%	3.0uA	NMOS CMOS	N	SOT-23-3L SOT-89-3L	3000PCS 1000PCS
FH2817	1.5~18.0	2.0~7.0	±1%	1.8uA	CMOS	N	SOT-23-3L SOT-89-3L	3000PCS 1000PCS
FH2818	1.5~18.0	2.0~7.0	±1%	1.8uA	NMOS	N	SOT-23-3L SOT-89-3L	3000PCS 1000PCS

Part No.	Vcc(V)	Vout(V)	Reset active Low or High	Delay	Output Type	IQ/IDIS	Recommend	Function Brief(Chs.)	Packaged	SQP
FH8003	1.15~6.00	2.63V / 2.93V	Low	140ms(Typ.)	Open Drain	3.2uA	Voltage Monitor	<ul style="list-style-type: none"> • 精确的复位阈值: ±2.5% • 漏极开路输出 • 最小140ms的复位脉冲宽度 	SOT-23-3L	3000PCS
FH8009	0.70~6.00	4.63V / 4.38V / 4.00V / 3.08V 2.93V / 2.63V / 2.30V	Low	140ms(Typ.)	CMOS	3.2uA	Voltage Monitor	<ul style="list-style-type: none"> • 精确的复位阈值: ±2.5%、±1% • 漏极开路输出/COMS输出 • 最小140ms的复位脉冲宽度 	SOT-23L SOT-23-3L	3000PCS
FH8010	0.70~6.00	4.63V / 4.38V / 4.00V / 3.08V 2.93V / 2.63V / 2.30V	High	140ms(Typ.)	CMOS	3.2uA	Voltage Monitor	<ul style="list-style-type: none"> • 精确的复位阈值: ±2.5%、±1% • 漏极开路输出/COMS输出 • 最小140ms的复位脉冲宽度 	SOT-23L SOT-23-3L	3000PCS
FH8011	0.70~6.00	4.63V / 4.38V / 4.00V / 3.08V 2.93V / 2.63V / 2.30V	High	140ms(Typ.)	TTL / COMS	3.2uA	Voltage Monitor	<ul style="list-style-type: none"> • 手动复位功能 • 精确的复位阈值: ±2.0% • 最小140ms的复位脉冲宽度 	SOT-143-4L	3000PCS
FH705	1.15~6.00	4.65V	Low	200ms (Typ.)	TTL / COMS	50.0uA	Voltage Monitor	<ul style="list-style-type: none"> • 内置看门狗电路 • 手动复位功能 • 低电压比较器 	SOP-8L	2500PCS
FH706	1.15~6.00	4.40V / 4.00V / 3.08V / 2.93V / 2.63V	Low	200ms (Typ.)	TTL / COMS	50.0uA	Voltage Monitor	<ul style="list-style-type: none"> • 内置看门狗电路 • 手动复位功能 • 低电压比较器 	SOP-8L	2500PCS
FH707	1.15~6.00	4.65V	Low / High	200ms (Typ.)	TTL / COMS	30.0uA	Voltage Monitor	<ul style="list-style-type: none"> • 手动复位功能 • 低电压比较器 	SOP-8L	2500PCS
FH708	1.15~6.00	4.40V / 4.00V / 3.08V / 2.93V / 2.63V	Low / High	200ms (Typ.)	TTL / COMS	30.0uA	Voltage Monitor	<ul style="list-style-type: none"> • 手动复位功能 • 低电压比较器 	SOP-8L	2500PCS
FH813	1.15~6.00	4.65V / 4.40V / 4.00V / 3.08V / 2.93V / 2.63V	High	200ms (Typ.)	TTL / COMS	50.0uA	Voltage Monitor	<ul style="list-style-type: none"> • 内置看门狗电路 • 手动复位功能 • 低电压比较器 	SOP-8L	2500PCS

■ Voltage Reference | 電壓基準芯片

Part No.	VKA	IKA	VREF	Voltage Tolerance	Packaged	SPQ
FH431	40V	100mA	2.5V	±0.4%	SOT-23-3L	3000PCS
FH432	8V	100mA	2.5V	±1%	SOT-23-3L	3000PCS
FH431A	36V	100mV	2.5V	±0.5%	SOT-23-6L	3000PCS
FH432A	18V	100mV	1.25V	±0.5%	SOT-23-6L	3000PCS

■ Voltage-Level Translator | 電平轉換器

Part No.	Translators per Package	Data Rate (Mbps)	VCCA Range (V)	VCCB Range (V)	Bidirectional	VCC Shutdown I/O State	Shutdown Icc Max(uA)	Logic Output	Features	Package
VLT0102	2	24/2	1.65~5.5	2.3~5.5	Yes	Hi-Z	5.50	Open-Drain/ Push-Pull	GPIO Level Shifter	SOT-23-8L TDFN-1.4x1-8L VSSOP-8L
VLT0104	4	24/2	1.65~5.5	2.3~5.5	Yes	Hi-Z	1.00	Open-Drain/ Push-Pull	GPIO Level Shifter	TSSOP-14 QFN2x2-12L QFN3.5x3.5-14L
VLT0204	4	100	1.2~5.5	1.65~5.5	Yes	Hi-Z	1.00	Push-Pull	GPIO Level Shifter	TSSOP-14L QFN2x2-12L QFN3.5x3.5-14L

Part No.	Vin Range(V)	Description	Switch Rdson (mΩ)	Response Time	Peak Current(A)	OVP trig(V)	Package	SPQ	Comment
FH87008	2.00~36.00	36V/34mΩ high side over voltega protector	34	100nS		0.50	SOT-23-6L DFN2*2-6L	3000PCS	OVP Level adjustable, Fast response time
FH87011	3.35~20.00	40mΩ 20V/10mΩ high side over voltega protector	40	100nS		1.26	SOT-23-6L	3000PCS	OVP Level adjustable, Fast response time
FH87014	3.35~36.00	36V/35mΩ high side over voltega protector	35	100nS		1.26	SOT-23-6L	3000PCS	OVP Level adjustable, Fast response time
FH87016	3.35~7.00	36V/33mΩ high side over voltega protector w.500V 7V TVS	33	100nS		6.10	DFN3*3-12L	5000PCS	OVP Level adjustable, Fast response time
FH87018	5.00~2.00	20V/12mΩ low side over voltega protector	12	100nS		0.50	SOT-23-6L	3000PCS	OVP Level adjustable, Fast response time
FH87028	3.60~36.00	36V/30mΩ low side over voltega protector	30	68nS		1.27	SOT-23-6L	3000PCS	OVP Level adjustable, Fast response time
FH87043	3.5~30.0	30V/2A OVP+OCP	130	70ns	0.5	Fix_6.15	DFN2*2-8L	3000PCS	Li+ Charger Front-End Protection IC With OVP, OCP and NTC
FH879xx	~29.0	Over-Voltage Protection Load Switch	30.7	50ns	8	5.95/6.2/6.8	QFN1.8*1.3-12L	3000PCS	OVP 5.95V/6.2V/6.8V/9.98V/10.5V and 14V, adjusted 4V~20V OVLO
FH87334	2.5~30.0	30V/2A High Side Over Voltage Protector	110	100nS	2	6	SOT-23-6L SOT-23-3L	3000PCS	OVP IC, 2.5~40V, OVP fixed 6.1V, 1.5A
FH86121	4.00~20.00	32V/30mΩ high side over voltega protector	30	100nS	5.5	FIX_6.9	CSP3*4-12L	3000PCS	OVP Level adjustable, Fast response time

Part No.	Vin (V)	Current Limit (A)	Output Revers	Channel	IQ(uA)	EN logic	Ron(Ω)	Package	SPQ
FH8018	2.0~5.5	0.80	No	1	80.00	H	200	SOT-23-5L	3000PCS
FH8019	2.4~5.5	0.80	Yes	1	1.00	H	60	SOT-23-6L SOT-23-5L	3000PCS
FH8020	2.2~6.0	1.10	No	1	23.00	H	100	SOT-23-5L	3000PCS
FH8021	2.4~5.5	ADJ	Yes	1	100.00	H	60	SOT-23-5L DFN2*2-6L	3000PCS
FH8022	2.4~5.5	1.50	Yes	1	1.00	H	60	SOT-23-5L	3000PCS
FH8024	2.4~5.5	1.20	Yes	1	0.10	L	60	SOT-23-5L	3000PCS
FH8025	2.4~5.5	1.90	Yes	1	0.10	L	60	SOT-23-5L	3000PCS
FH8028	2.0~5.5	2.1 3.5	No	1	1.00	H	80	SOT-23-5L	3000PCS
FH8029	2.4~5.5	2.50	Yes	1	0.01	H	60	SOT-23-5L	3000PCS
FH8201	2.2~5.5	1.50*2	No	2	~	H	200	SOP-8L	2500PCS
FH8240	2.7~18.0	3.50	No	1 / 2	48.00	H	45	SOT-23-5L SOP-8L	3000PCS
FH8241	2.4~6.0	4.00	No	1	2.00	H	45	SOT-23-5L	3000PCS

Part No.	Vin(V)	Average Current(uA)	Circuit Type	Output Form	Magnetic Characteristics	Junction temperature range(°C)	Package	SPQ
FH8915	1.65~6.0	3.00	Omnipolar	NMOS	Bops=1.5mT,Bopn=-1.5mT, Brps=1.1mT,Brpn=-1.1mT	-40 ~ 85	SOT-23-3L TSOT-23-L	3000PCS
FH8913	1.65~6.0	3.00	Omnipolar	NMOS	Bops=3.5mT,Bopn=-3.0mT, Brps=3.7mT,Brpn=-2.6mT	-40 ~ 85	SOT-23-3L TSOT-23-3L DFN2*2-3L	3000PCS 5000PCS
FH8912	2.4~5.5	4.00	Omnipolar	CMOS NMOS	Bops=3.5mT,Bopn=-3.0mT, Brps=3.7mT,Brpn=-2.6mT	-40 ~ 85	SOT-23-3L	3000PCS
FH8911	3.8~35	10.00	Switch	NMOS	Bops=0.6mT,Bopn=-1.85mT, Brp=1.5mT	-40 ~ 125	SOT-23-3L	3000PCS

CMOS Logical Circuit CMOS邏輯電路

Part No.	Voltage Range	Function	Symbol	Iq	Tpd	Packaged	SPQ
FH74SZ08	1.2V ~ 6.0V	2-input CMOS and Gate	AND2	1.0uA	2.6ns (TYP.)	SOT-353L	3000PCS
FH74SZ04	1.2V ~ 6.0V	CMOS inverter	INV	1.0uA	2.6ns (TYP.)	SOT-353L	3000PCS

Standard Logics Circuit 标准逻辑电路

Part Number	V _{CC Min} (V)	V _{CC Max} (V)	Number of Gates	Family	tpd max@ (1.5V)	tpd max @ 1.8V (ns)	tpd max @ 2.5V (ns)	tpd max @ 3.3V (ns)	tpd max @ 5.0V (ns)	Input/ Output Current	Function/ Description	Output Type	Packages	SPQ
FH74HC00	2.00	6.00	4	HC			90		18	4	QUAD 2 Input NAND Gate	Push-Pull	SOP-14L	2500PCS
FH74HC04	2.00	6.00	4	HC			90		18	4	HEX 1 Input Inverter	Push-Pull	SOP-14L	2500PCS
FH74HC05	2.00	6.00	6	HC			90		18	4	HEX 1 Input Inverter	Open-Drain	SOP-14L	2500PCS
FH74HC08	2.00	6.00	4	HC			90		18	4	QUAD 2 Input AND Gate	Push-Pull	SOP-14L	2500PCS
FH74HC125	2.00	6.00	4	HC					20	4	QUAD 2 Input 3-State Buffer OE Low	3-State	SOP-14L	2500PCS
FH74HC126	2.00	6.00	4	HC					20	4	QUAD 2 Input 3-State Buffer OE High	3-State	SOP-14L	2500PCS
FH74HC138	2.00	6.00		HC			190		38	4	3-to-8 Line Decoder Demultiplexer	Push-Pull	SOP-16L TSSOP-16L	2500PCS
FH74HC14	2.00	6.00	6	HC			125		25	4	HEX 1 Input Schmitt Trigger Inverter	Push-Pull	SOP-14L	2500PCS
FH74HC164	2.00	6.00	4	HC			170		12	4	8-Bit Shift Register		SOP-14L	2500PCS
FH74HC32	2.00	6.00	4	HC			90		18	4	QUAD 2 Input OR Gate	Push-Pull	SOP-14L	2500PCS
FH74HC245	3.00	6.00		HC					13				SOP-20L	2500PCS
FH74HC595	2.00	6.00		HC			220		44	4	8-Bit Shift Register 8-Bit Output Register	Push-Pull	SOP-16L	2500PCS

Part No.	Description	Architecture	Resolution	Update Rate (SPS)	Input configuration	Interface	SNR	VDDspan	Icc	Temp Range	Package	SPQ
FH1808	96kHz,24bit audio ADC	Σ-Δ	24bit	8kHz ~ 96kHz	2CH single-ended input	24-bit left justified / I2S	99dB	2.7V ~ 3.6V(DVDD) 4.5V ~ 5.5V(AVDD)	2mA(DVDD) 10mA(AVDD)	-40 ~ 85°C	TSSOP-14L	3000PCS
FH5340	192kHz,24bit audio ADC	Σ-Δ	24bit	8kHz ~ 192kHz	2CH single-ended input	24-bit left justified / I2S	96dB	3.0V ~ 3.6V(DVDD) 3.0V ~ 3.6V(AVDD)	2mA(DVDD) 10mA (AVDD)	-40 ~ 85°C	TSSOP-16L	3000PCS

Part Number	Supply Voltage(V)	Interface	Data Rate(kbps)	No. of Rx.	No.of Tx.	Operating Temperature Range(°C)	Package	SPQ
RS232	4.5~5.5	RS232	120	2	2	-40 to +85(°C)	SOP-16L	2500PCS
RS3232	3.0~5.5	RS232	470	2	2	-40 to +85(°C)	SOP-16L TSSOP-16L	2500PCS
RS3132	1.8 / 3.0~5.5	RS232	1000	2	2	-40 to +125(°C)	QFN-24L	3000PCS

Part Number	Supply Voltage(V)	Interface	Data Rate(kbps)	DUPLEX	No. of Tx.	No. of Rx.	Bus Nodes	Bus-Polarity Correcting	Operating Temperature Range(°C)	Package	SPQ
RS485	3.0~5.5	RS485/RS422	0.25	Half	1	1	256	YES	-40 to +85(°C)	SOP-8L	2500PCS
RS485N	4.5~5.5	RS485/RS422	0.50	Half	1	1	256	YES	-40 to +85(°C)	SOP-8L	2500PCS
RS487	3.0~5.5	RS485/RS422	0.50	Half	1	1	256	NO	-40 to +85(°C)	SOP-8L	2500PCS
RS487N	3.0~5.5	RS485/RS422	20.00	Half	1	1	256	NO	-40 to +85(°C)	SOP-8L	2500PCS
RS3085	3.0~5.5	RS485/RS422	10.00	Half	1	1	256	NO	-40 to +85(°C)	SOP-8L	2500PCS
RS75176	3.0~5.5	RS485/RS422	5	Half	1	1	128	NO	-40 to +85(°C)	SOP-8L DFN-8L	2500PCS 4000PCS
RS75176N	3.0~5.5	RS485/RS422	10	Half	1	1	128	NO	-40 to +85(°C)	SOP-8L DFN-8L	2500PCS 4000PCS

Part No.	Keys	VDD	Operating current	Output Type	Maxium ON Time	Power on/ reflash Time	LDO Built	Operating Temperature Range	Package	SPQ
FH233	Single	2.5~5.5	5.0uA	CMOS/ NMOS	220ms	0.5 / 4 sec	Y	0 ~ 70(°C)	SOT-23-6L	3000PCS
FH233C	Single	2.4~5.5	2.0uA	CMOS	12ms	0.4 / 4 sec	Y	-40 ~ 85(°C)	SOT-23-6L TSOT-23-6L	3000PCS
FH8223	Single	2.4~5.5	1.5uA	CMOS	45ms	0.5 / 4 sec	Y	-20 ~ 85(°C)	SOT-23-6L	3000PCS
FH8233	Single	2.4~5.5	1.5uA	CMOS	16ms	0.5 / 4 sec	Y	0 ~ 85(°C)	SOT-23-6L	3000PCS
FH8323	Single	2.0~5.5	1.5uA	CMOS	16ms	0.5 / 4 sec	Y	0 ~ 70(°C)	DFN2*2-6L	5000PCS
FH8323Q	Single	2.4~5.5	3.5uA	CMOS	16ms	0.5 / 4 sec	Y	-20 ~ 85(°C)	DFN2*2-6L	5000PCS
FH8224	4/3/2	2.4~5.5	2.5uA	CMOS/ NMOS	60ms	0.5 / 4 sec	Y	-40 ~ 85(°C)	SOP-16L SOP-8L	3000PCS
FH8225	6	2.5~5.5	23.0uA	CMOS/OD	32ms	0.5 / 80 sec	Y	0 ~ 70(°C)	SOP-16L	3000PCS
FH8226	Single	2.0~5.5	3.0uA	PWM	0	0.5 / 4 sec	Y	0 ~ 70(°C)	SOT-23-6L SOP-8L	3000PCS 4000PCS

Part Number	Supply Voltage(V)	CH.	GBW(Typ)(MHz)	Ron(Max)(Ohm)	Iq (Max)(uA)	Switch configuration	Operating Temperature Range(°C)	Package	SPQ
FH3157	1.80-5.50	1	100	2.00	0.30	SPDT	-40~125(°C)	SC70-6L	3000PCS
FH4157	1.65-5.50	1	100	1.15	0.30	SPDT	-40~125(°C)	SC70-6L	3000PCS
FH3222	1.65~4.50	2	250	4.50	-	DPDT	-40 ~ +85(°C)	MSOP-10L	3000PCS
FH2103	1.80~5.50	1	30	0.60	1.00	SPDT	-40~125(°C)	SC70-6L SOT-23-6L	3000PCS
FH2057	1.80~5.50	1	300	4.50	1.00	SPDT	-40~125(°C)	SC70-6L SOT-23-6L	3000PCS
FH2117	2.50~5.50	2	400	4.00	0.15	SPDT	-40 ~ +85(°C)	QFN1.4*1.8-10L	4000PCS
FH2118	2.50~5.50	2	80	0.80	0.15	SPDT	-40 ~ +85(°C)	QFN-1.4*1.8-10L	4000PCS
FH2257	1.80~5.50	1	30	0.60	1.00	SPDT	-40~125(°C)	SC70-6L SOT-23-6L	3000PCS
FH2299	1.80~5.50	4	300	4.50	1.00	SPDT	-40~125(°C)	QFN3*3-16L	3000PCS

Part No.	VDD (V)	CH	Iq (uA)	GBW (Typ)(MHz)	Slew Rate (Typ)(V/us)	Rail-Rail In / Out	Vos (25°C)(Max)(mV)	Offset Drift (Typ)(uV/C)	Packaged	SPQ
LM358	3.0~36.0	2	200	1.20	0.55	Yes	3.00	1.00	SOP-8L MSOP-8L	2500PCS
LMV358	2.5~5.5	2	130	1.00	0.70	Yes	4.00	2.00	SOP-8L MSOP-8L	2500PCS
LM321	3.0~32.0	1	200	1.00	0.55	Yes	3.00	1.00	SOT-23-5L	3000PCS
LMV321	2.5~5.5	1	60	1.20	0.50	Yes	4.00	2.00	SC70-5 SOT-23-5L	3000PCS
LM324	3.0~36.0	4	200	1.20	0.55	Yes	3.00	1.00	SOP-14L TSSOP-14L	2500PCS
LMV324	2.5~5.5	4	130	1.00	0.70	Yes	4.00	2.00	SOP-14L TSSOP-14L	2500PCS
LMV2191	1.8~6.0	1	0.9	0.018	0.01	Yes	0.60	0.40	SC70-5 SOT-23-5L	3000PCS
LM2902	3.0~36.0	4	200	1.20	0.55	Yes	3.00	1.00	SOP-14L TSSOP-14L	2500PCS
LM2904	3.0~36.0	2	200	1.20	0.55	Yes	3.00	1.00	SOP-8L MSOP-8L	2500PCS
FH2336	2.5~5.5	1	930	1.53	0.90	Yes	0.02	0.02	SOT-23-5L	3000PCS
FH2335	2.5~5.5	2	465	1.53	0.90	Yes	0.02	0.02	SOP-8L MSOP-8L	2500PCS
JRC4558	4.0~18.0	2	300	1.00	1.00	Yes	12.00	1.40	SOP-8L MSOP-8L	2500PCS
JRC4560	4.0~18.0	2	200	10.00	4.00	Yes	6.00	1.20	SOP-8L	2500PCS
JRC4580	2.0~18.0	2	200	15.00	5.00	Yes	3.00	0.80	SOP-8L	2500PCS

Part No.:	VIN Range(V)	Class	Channels	Po (Max Output)	ISD(uA)	THD+N(%)	PSRR (db)	Packaged	SPQ
FH2010	2.7~5.5	D	1	3.0W	0.1	0.05%	75	SOP-8L MSOP-8L	3000PCS
FH2011	3.0~5.5	D	1	3.0W	0.1	1.00%	75	SOP-8L MSOP-8L	3000PCS
FH2011N	2.5~5.5	D	1	1.0W	1.00	1.00%	24	SOT-23-6L	3000PCS
FH2045	2.7~5.5	D	1	3.0W	0.10	10.00%	70	MSOP-8L	3000PCS
FH2046	2.7~5.5	D	1	3.0W	0.10	10.00%	75	MSOP-8L	3000PCS
FH4145	3.0~5.6	D	1	3.0W	0.10	10.00%	80	SOP-8L MSOP-8L	3000PCS
FH4145E	2.5~5.5	D	1	5.0W	0.10	10.00%	77	ESOP-8L	2500PCS
FH4158	3.0~5.5	D	1	5.0W	0.10	0.30%	50	SOP-8L	3000PCS
FH8138	2.5~5.5	D	1	5.0W	0.10	10.00%	77	SOP-8L	2500PCS
FH8305	2.5~6.0	D	1	5.10W	0.10	10.00%	80	ESOP-8L	2500PCS
FH8121	2.5~6.0	D	1	4.00W	0.10	10.00%	80	SOP-8L	2500PCS
FH8122	2.5~5.5	D	1	3.00W	0.10	10.00%	80	SOP-8L	2500PCS
FH8683	2.5~10.0	D	1	10.0W	1.00	10.00%	25	SOP-8L	2500PCS
FH84216	5.0~10.0	D	2	10.0W	4.00	0.03%	85	ETSSOP-24L	40PCS/Tube
FH84225	6.0~18.0	D	2	18.0W	1.00	0.06%	65	TSSOP-24L	40PCS/Tube

Part No.:	VIN Range(V)	Class	Channels	Po (Max Output)	ISD(uA)	THD+N(%)	PSRR (db)	Packaged	SPQ
FH8508	2.5~8.8	AB / D	1	8.0W	0.10	10.00%	80	ESOP-8L	2500PCS
FH8139	2.5~5.5	AB / D	1	5.0W	0.10	10.00%	77	SOP-8L	2500PCS
FH8511	3.0~8.8	AB / D	1	17.0W	0.10	10.00%	80	ESOP-8L	2500PCS
FH84251	3.0~5.25	AB/D	2	3.00W	1.00	0.20%	80	QFN3*3-16L	5000PCS
FH4890	2.2~5.0	AB	1	1.00W	0.10	1.00%	62	SOP-8L MSOP-8L	3000PCS
FH4990	2.2~5.5	AB	1	2.00W	0.10	1.00%	62	MSOP-8L	3000PCS
FH4871	2.0~6.0	AB	1	2.50W	0.60	10.00%	85	SOP-8L ESOP-8L	3000PCS
FH4872	2.0~6.0	AB	2	3.00W	1.00	0.40%	70	TSSOP-24L	2500PCS
FH4863	2.0~6.0	AB	2	2.20W	0.70	0.30%	67	SOP-16L	2500PCS

Part NO.	Key Features	Vin (V)	Vout (V)	Iout (A)	Max Eff.(%)	Freq. (KHz)	DC-DC Ch.	Others	OCP	Package
FH78021	2Chs Buck	2.5~6.0	0.6~Vin	1.20/1.20	94	1500	2	-	V	DFN3*3-10L
FH7056	3 CHs Buck 1 CH LDO I2C	2.7~5.5	0.6~Vin	3.00/1.50/2.00/0.30	96	1500	3	LDO * 1	V	QFN4*4-24L
FH7003C	3 CHs Buck	2.5~5.5	0.6~Vin	1.50/1.50/1.50	93	1500	3	-	V	QFN3*3-20L
FH7004	2A+2A+2A+2A	2.7~5.5	0.6~Vin	2.00/2.00/2.00/2.00	96	1500	4	-	V	QFN4*4-24L
	Sync Buck									
FH7059	2A+2A+2A+2A	2.7~5.5	0.6~Vin	2.00/2.00/2.00/2.00	96	1500	4	-	V	QFN4*4-24L
	Sync Buck									
FH7036	2A+2A+2A	2.7~5.5	0.6~Vin	2.00/2.00/2.00	96	1500	3	-	V	QFN3*3-20L
	Sync Buck									
FT7002	PWM Boost DC/DC	2.5~5.5	2.5~5.5/ADJ	600.00	/	1.2MHz	1	/	V	SOT-23-6L
	LDO		3.0	300.00						
FT7005	PWM Boost DC/DC	2.5~5.5	2.5~5.5/ADJ	600.00	/	1.2MHz	1	/	V	QFN3*3-10L
	Dual LDO		1.2~5.0 ADJ	300*2						

Part No.	Density	Serial Interface	Max Frequency	Vcc Range	Grade	Packages	SPQ
FM24C02B	2Kbit	IIC	1MHz	1.7V-3.6V	G		
FM24C02C	2Kbit	IIC	400KHz	1.7V-5.5V	G/A1/A2/E0/E1/E2	①SOP-8L	①2500PCS
FM24C04D	4Kbit	IIC	1MHz	1.7V-5.5V	G/A1/A2/E0/E1/E2	②TSSOP-8L	②2500PCS
FM24C08D	8Kbit	IIC	1MHz	1.7V-5.5V	G/A1/A2/E0/E1/E2	③TSOT-23-5L	③3000PCS
FM24C16D	16Kbit	IIC	1MHz	1.7V-5.5V	G/A1/A2/E0/E1/E2	①SOP-8L	①2500PCS
FM24C32D	32Kbit	IIC	1MHz	1.7V-5.5V	G/A1/A2/E0/E1/E2	②TSSOP-8L	②2500PCS
FM24C64D	64Kbit	IIC	1MHz	1.7V-5.5V	G/A1/A2/E0/E1/E2	③TSOT-23-5L	③3000PCS
FM24C128D	128Kbit	IIC	1MHz	1.7V-5.5V	G/A1/A2/E0/E1/E2	④WLCSP	④5000PCS
FM24C128D	128Kbit	IIC	1MHz	1.7V-5.5V	G/A1/A2/E0/E1/E2	①SOP-8L ②TSSOP-8L ③WLCSP	①2500PCS ②2500PCS ③5000PCS
FM93C46A	1Kbit	Microwire	2MHz	1.7V-5.5V	G/A1/A2/E0/E1/E2	①SOP-8L	①2500PCS
FM93C56A	2Kbit	Microwire	2MHz	1.7V-5.5V	G/A1/A2/E0/E1/E2	②TSSOP-8L	②2500PCS
FM93C66A	4Kbit	Microwire	2MHz	1.7V-5.5V	G/A1/A2/E0/E1/E2	③TSOT-23-5L	③3000PCS
FM25080	8Kbit	SPI	20MHz	1.7V-5.5V	G/A1/A2/E0/E1/E2	①SOP-8L	①2500PCS
FM25160	16Kbit	SPI	20MHz	1.7V-5.5V	G/A1/A2/E0/E1/E2	②TSSOP-8L	②2500PCS
FM25320	32Kbit	SPI	20MHz	1.7V-5.5V	G/A1/A2/E0/E1/E2	③TDFN2*3-8L	③5000PCS
FM25640	64Kbit	SPI	20MHz	1.7V-5.5V	G/A1/A2/E0/E1/E2	④SOT-23-5L	④3000PCS

Part No.	Density	Serial Interface	Max Frequency	Vcc Range	Packages	Grade	Status
FM25W01	1Mbit	SPI, Dual SPI, Quad SPI, QPI	100MHz	1.65V-3.6V	SO, TS, SN, CSP	G	M
FM25Q02	2Mbit	SPI, Dual SPI, Quad SPI, QPI	104MHz	2.3V-3.6V	SO, SOB, TS, DN, US	G/A1/A2/E0/E1/E2	M
FM25W02	2Mbit	SPI, Dual SPI, Quad SPI, QPI	100MHz	1.65V-3.6V	SO, TS, SN, CSP	G	M
FM25Q04	4Mbit	SPI, Dual SPI, Quad SPI, QPI	104MHz	2.3V-3.6V	SO, TS, DN	G/A1/A2/E0/E1/E2	M
FM25W04	4Mbit	SPI, Dual SPI, Quad SPI, QPI	100MHz	1.65V-3.6V	SO, TS, SN, CSP	G/A1/A2/E0/E1/E2	M
FM25Q08A	8Mbit	SPI, Dual SPI, Quad SPI, QPI	104MHz	2.3V-3.6V	SO, TS, DN	G/A1/A2/E0/E1/E2	M
FM25Q16A	16Mbit	SPI, Dual SPI, Quad SPI, QPI	104MHz	2.3V-3.6V	SO, SOB, DN, US, CSP	G/A1/A2/E0/E1/E2	M
FM25W16	16Mbit	SPI, Dual SPI, Quad SPI, QPI	104MHz	1.65V-3.6V	SO, SOB, DNA, CSP	G	M
FM25W32	32Mbit	SPI, Dual SPI, Quad SPI, QPI	104MHz	1.65V-3.6V	SO, SOB, DNA, CSP	G	M
FM25Q64	64Mbit	SPI, Dual SPI, Quad SPI, QPI	104MHz	2.3V-3.6V	SO, SOB, DNA, BGB	G/A1/A2/E0/E1/E2	M



● Icon location for our branch office or representative office.
標注位置為我們的分支機構或代表處



【企業微信客服】

Contact | 聯絡窗口

<http://www.fordevices.com/Article/Contact.html>



86-755-8221 7619



admin@fordevices.com



86-755-8221 1140



400 697 75 | 800 972 44



【企業微信入口】

Important statement

- The information herein is subject to change without notice.
- Neither reproduction, duplication nor unauthorized use of this catalog in whole or part is allowed without the prior written approval of ForDevices Inc.
- The colors of the products reproduced herein ("Products") may be different from the actual colors. Check colors on actual products before using the Products.
- Circuits and respective application methods described herein are for reference only. ForDevices Inc. shall not be liable for any damages or losses resulting from any claim by third parties that any Products or application methods described herein infringe any right intellectual property right. All intellectual property rights with respect to the Products belong exclusively to ForDevices Inc.

ForDevices Inc. does not grant users of the Products any right or license to the Products hereunder.
- When Products include Strategic Products (or Services) stipulated in the Foreign Exchange and Trade Control Law, they shall not be exported without permission of governmental authorities.
- The Products cannot be used as part of any device or equipment which influences the human body or requires a significantly high reliability, such as physical exercise equipment, medical equipment, disaster prevention equipment, gas related equipment, vehicles, in-vehicle equipment, aviation equipment, aerospace equipment, and nuclear-related equipment.
- The products described herein are not designed to be radiation-proof.
- Although ForDevices Inc. exerts the greatest possible effort to ensure high quality and reliability, the failure or malfunction of semiconductor products may occur. The user of these products should therefore give thorough consideration to safety design, including redundancy, fire-prevention measures, and malfunction prevention, to prevent any accidents, fires, or community damage that may ensue.



本目錄內容在產品改進時，有可能未經預告而有所更改。